



10.4" Industrial Monitors
DuraVision®

FDX1001 / FDX1001T / FDX1002
FDV1001 / FDV1001T / FDV1002



Gray cabinet with stand



Black cabinet with stand



Gray cabinet free mount Black cabinet free mount

High brightness 10.4" monitors with PC and video inputs

Standard Models

FDX1001
FDV1001

With Built-In Touch Panel

FDX1001T
FDV1001T

With Screen Capture Function

FDX1002
FDV1002

Compact 10.4" Size

Composite (RCA)/S-Video

3D Y/C Separation Circuit

*NTSC signal

Underscan (100%) Display

600 cd/m² Brightness (Max.)

*FDX1001, FDX1002

White LED Backlight

Crosshair Display

2-Year Warranty/24-Hour Use

DuraVision®

Standard Model



With Built-In Touch Panel



With Screen Capture Function



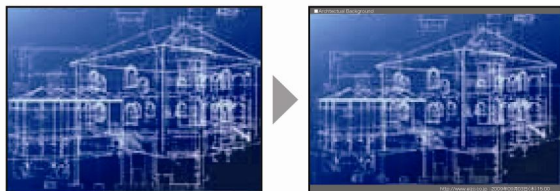
PC and Video Inputs

A D-Sub mini 15-pin (analog) input is included for connecting to PCs. Composite (RCA) and S-Video inputs which support NTSC, PAL, and SECAM are included for connecting to audio/visual equipment. For noise (flicker) reduction with NTSC signals, the composite and S-Video inputs have a 3-dimensional Y/C separation circuit that separates the video image brightness signal (Y signal) and color information signal (C signal) for NTSC.



Underscan Display

These monitors offer both underscan and normal display settings. The underscan setting shows 100% of an image and is ideal for video. The normal setting displays about 95% of the image, which eliminates extraneous TV broadcasting data that sometimes appears at the edges of the screen.



Normal (95%) Display

Underscan (100%) Display

600 cd/m² Maximum Brightness Display

With a maximum brightness of 600 cd/m² for the FDX1001 and FDX1002, the screen is highly visible even in bright ambient environments.

Designed to Meet a Wide Range of Needs

These 10.4" screens come in three different variations – standard, touch screen, and image capture capability – with a choice of either a 1024 x 768 or a 640 x 480 native resolution. This versatility in a single size helps ensure there is a monitor to meet the diversified needs of industrial settings.

Configurations for Different Installations

To accommodate the requirements of various installation environments, all models are available in five different configurations: standard (with stand), free mount (no stand), chassis, panel mount, and rack mount.

IP65 Rating for Panel Mount Configuration

The front panel of the panel mount configuration is IP65-rated meaning it can withstand dust ingress and is protected against low-pressure water jets.

Energy-Saving White LED

All models employ a white LED backlight which offers a high brightness and limits power consumption compared to standard CCFL backlights. Minimum power consumption is as little as 9 watts depending on the model. Furthermore, the LED backlight is mercury free which minimizes its impact on the environment.

Durable Construction

The cabinets do not contain any ventilation holes and the perimeter of the control buttons are sealed, making these monitors impervious to liquids and dust.



Top of monitor



Control buttons

Flexible Positioning

The monitors are built to operate in both standard horizontal positions and non-standard positions such as attached to a mounting device and tilted at an extreme angle. Furthermore, their internal circuitry is designed to withstand varying operating temperatures of different installation environments.

Crosshair Display

Crosshairs can be displayed on the screen for convenience when connected to a microscope. Both the thickness (narrow, medium, wide) and color (white, black, red, green) are adjustable.



- 2-year warranty that covers 24-hour use
- RoHS compliant
- Robust steel cabinet
- Two color variations



Gray

Black

Touch Screen Color LCD Monitors FDX1001T/ FDV1001T

- 10 million touches minimum
- Resistant to liquids and dust
- Also accepts touch input from a gloved hand

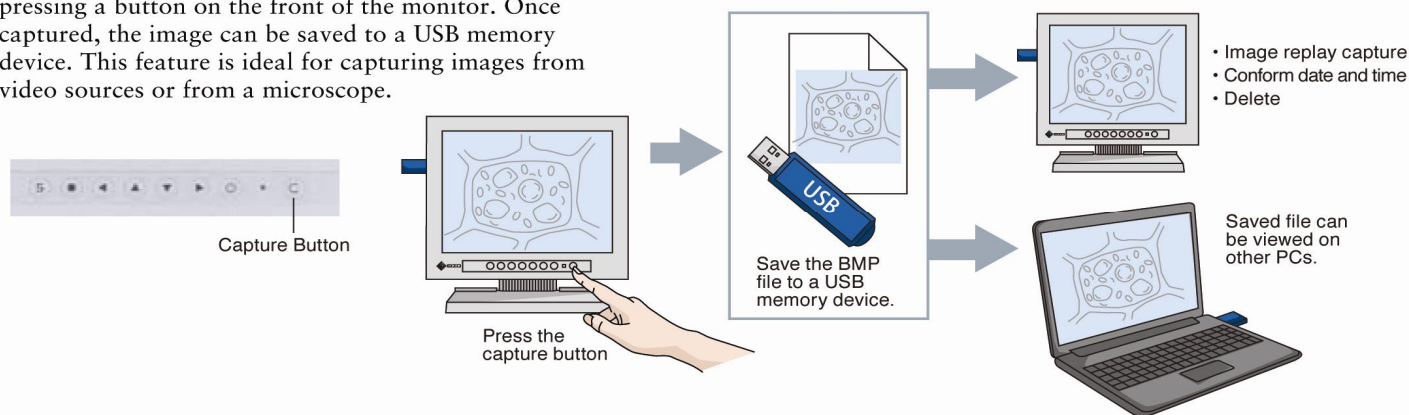


Touch Panel Specifications

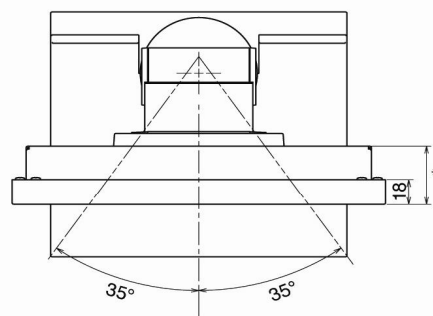
Touch Panel Type	Analog resistive
Touch Life	10 million (min.)
Communication Protocol	RS-232C
Compatible OS	Windows Vista (32-bit) / XP (32-bit) / 2000

Image Capture Function

The DuraVision FDX1002 and DuraVision FDV1002 feature a screen capture function that captures and saves a displayed still image in bitmap format simply by pressing a button on the front of the monitor. Once captured, the image can be saved to a USB memory device. This feature is ideal for capturing images from video sources or from a microscope.

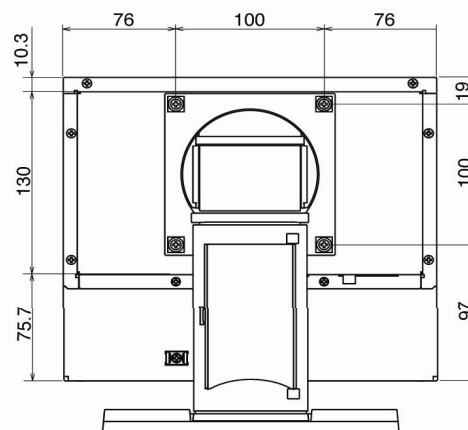
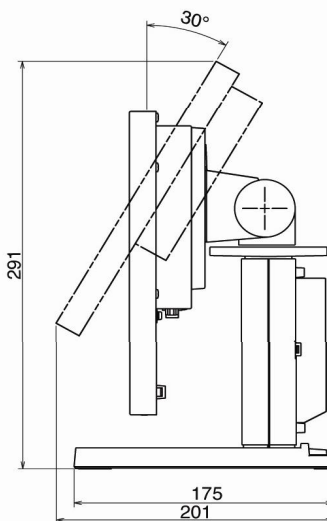
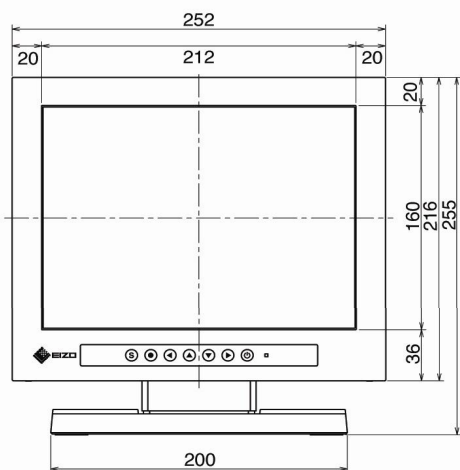


Dimensions (mm)



Model name	FDX1001	FDV1001	FDX1001T	FDV1001T	FDX1002	FDV1002
With stand	3.6 kg	3.4 kg	3.9 kg	3.7 kg	3.7 kg	3.5 kg
Without stand	2.0 kg	1.8 kg	2.3 kg	2.1 kg	2.1 kg	1.9 kg
Hole spacing (VESA)	100 mm			100 mm		
Operating temperature	0 – 40°C, 20 – 80% R.H. (No condensation)					

* FDX1001/FDV1001: 43 mm, FDX1001T/FDV1001T: 45 mm, FDX1002/FDV1002: 49 mm



SPECIFICATIONS

	Standard Models		With Built-In Touch Panel		With Screen Capture Function	
	FDX1001	FDV1001	FDX1001T	FDV1001T	FDX1002	FDV1002
Model Variations	With Stand, Without Stand, Chassis, Panel Mount, Rack Mount	With Stand, Without Stand, Chassis, Panel Mount, Rack Mount	With Stand, Without Stand, Chassis, Panel Mount, Rack Mount	With Stand, Without Stand, Chassis, Panel Mount, Rack Mount	With Stand, Without Stand	With Stand, Without Stand
Panel Size	10.4 / 26 cm (263 mm diagonal)	10.4 / 26 cm (263 mm diagonal)	10.4 / 26 cm (263 mm diagonal)	10.4 / 26 cm (263 mm diagonal)	10.4 / 26 cm (263 mm diagonal)	10.4 / 26 cm (263 mm diagonal)
Active Display Size (H × V)	210.4 × 157.8 mm	211.2 × 158.4 mm	210.4 × 157.8 mm	211.2 × 158.4 mm	210.4 × 157.8 mm	211.2 × 158.4 mm
Panel Type	TN	TN	TN	TN	TN	TN
Viewing Angles (H, V)	160°, 130° (at contrast ratio of 10:1)	160°, 140° (at contrast ratio of 10:1)	160°, 130° (at contrast ratio of 10:1)	160°, 140° (at contrast ratio of 10:1)	160°, 130° (at contrast ratio of 10:1)	160°, 140° (at contrast ratio of 10:1)
Brightness	600 cd/m²	450 cd/m²	460 cd/m²	350 cd/m²	600 cd/m²	450 cd/m²
Contrast	700:1	700:1	700:1	700:1	700:1	700:1
Native Resolution	1024 × 768 (4:3 aspect ratio)	640 × 480 (4:3 aspect ratio)	1024 × 768 (4:3 aspect ratio)	640 × 480 (4:3 aspect ratio)	1024 × 768 (4:3 aspect ratio)	640 × 480 (4:3 aspect ratio)
Pixel Pitch	0.2055 × 0.2055 mm	0.33 × 0.33 mm	0.2055 × 0.2055 mm	0.33 × 0.33 mm	0.2055 × 0.2055 mm	0.33 × 0.33 mm
Display Colors	16.7 million	16.2 million	16.7 million	16.2 million	16.7 million	16.2 million
Cabinet Colors	Gray, Black	Gray, Black	Gray, Black	Gray, Black	Gray, Black	Gray, Black
Dot Clock	Analog: 65 MHz	Analog: 31 MHz	Analog: 65 MHz	Analog: 31 MHz	Analog: 31 MHz	Analog: 31 MHz
Analog Scanning Frequency (H, V)	24 – 50 kHz, 55 – 75 kHz	24 – 32 kHz, 56 – 70.5 Hz	24 – 50 kHz, 55 – 75 kHz	24 – 32 kHz, 56 – 70.5 Hz	24 – 50 kHz, 55 – 75 kHz	24 – 32 kHz, 56 – 70.5 Hz
Video Input Terminals	PC: D-Sub mini 15 pin AV: Composite / S-Terminal	PC: D-Sub mini 15 pin AV: Composite / S-Terminal	PC: D-Sub mini 15 pin AV: Composite / S-Terminal	PC: D-Sub mini 15 pin AV: Composite / S-Terminal	PC: D-Sub mini 15 pin AV: Composite / S-Terminal	PC: D-Sub mini 15 pin AV: Composite / S-Terminal
USB Ports / Standard	-	--	-	-	1 downstream / USB 2.0	1 downstream / USB 2.0
Plug & Play	VESA DDC 2B	VESA DDC 2B	VESA DDC 2B	VESA DDC 2B	VESA DDC 2B	VESA DDC 2B
Power Requirements (Main Unit)	DC 12 V ± 10%	DC 12 V ± 10%	DC 12 V ± 10%	DC 12 V ± 10%	DC 12 V ± 10%	DC 12 V ± 10%
Power Consumption	11 W (maximum)	9 W (maximum)	11 W (maximum)	9 W (maximum)	16 W (maximum)	13 W (maximum)
Power Save Mode	Less than 0.5 W	Less than 0.5 W	Less than 0.5 W	Less than 0.5 W	Less than 0.5 W	Less than 0.5 W
Power Requirements (with AC adaptor)	AC 100 – 120 V / 200 – 240 V ± 10%, 50 / 60 Hz	AC 100 – 120 V / 200 – 240 V ± 10%, 50 / 60 Hz	AC 100 – 120 V / 200 – 240 V ± 10%, 50 / 60 Hz	AC 100 – 120 V / 200 – 240 V ± 10%, 50 / 60 Hz	AC 100 – 120 V / 200 – 240 V ± 10%, 50 / 60 Hz	AC 100 – 120 V / 200 – 240 V ± 10%, 50 / 60 Hz
Power Consumption	13 W (maximum)	10 W (maximum)	14 W (maximum)	10 W (maximum)	18 W (maximum)	15 W (maximum)
Power Save Mode	Less than 1.3 W	Less than 1.3 W	Less than 1.3 W	Less than 1.3 W	Less than 1.3 W	Less than 1.3 W
Tilt / Swivel / Pivot	30° Up / 35° Right, 35° Left	30° Up / 35° Right, 35° Left	30° Up / 35° Right, 35° Left	30° Up / 35° Right, 35° Left	30° Up / 35° Right, 35° Left	30° Up / 35° Right, 35° Left
Dimensions (W × H × D)	With Stand: 252 × 255 × 175 mm Without Stand: 252 × 216 × 43 mm	With Stand: 252 × 255 × 175 mm Without Stand: 252 × 216 × 43 mm	With Stand: 252 × 255 × 175 mm Without Stand: 252 × 216 × 45 mm	With Stand: 252 × 255 × 175 mm Without Stand: 252 × 216 × 45 mm	With Stand: 252 × 255 × 175 mm Without Stand: 252 × 216 × 49 mm	With Stand: 252 × 255 × 175 mm Without Stand: 252 × 216 × 49 mm
Net Weight	With Stand: 3.6 kg Without Stand: 2 kg	With Stand: 3.4 kg Without Stand: 1.8 kg	With Stand: 3.9 kg Without Stand: 2.3 kg	With Stand: 3.7 kg Without Stand: 2.1 kg	With Stand: 3.7 kg Without Stand: 2.1 kg	With Stand: 3.5 kg Without Stand: 1.9 kg
Color Adjustment	PC: Brightness, Contrast, Black Level, PC Settings (Clock, Phase, Position, Range Adjustment, Color Mode [R/G/B], Reset) AV: Brightness, Contrast, Black Level, Sharpness, Saturation, Hue	PC: Brightness, Contrast, Black Level, PC Settings (Clock, Phase, Position, Range Adjustment, Color Mode [R/G/B], Reset) AV: Brightness, Contrast, Black Level, Sharpness, Saturation, Hue	PC: Brightness, Contrast, Black Level, PC Settings (Clock, Phase, Position, Range Adjustment, Color Mode [R/G/B], Reset) AV: Brightness, Contrast, Black Level, Sharpness, Saturation, Hue	PC: Brightness, Contrast, Black Level, PC Settings (Clock, Phase, Position, Range Adjustment, Color Mode [R/G/B], Reset) AV: Brightness, Contrast, Black Level, Sharpness, Saturation, Hue	PC: Brightness, Contrast, Black Level, PC Settings (Clock, Phase, Position, Range Adjustment, Color Mode [R/G/B], Reset) AV: Brightness, Contrast, Black Level, Sharpness, Saturation, Hue	PC: Brightness, Contrast, Black Level, PC Settings (Clock, Phase, Position, Range Adjustment, Color Mode [R/G/B], Reset) AV: Brightness, Contrast, Black Level, Sharpness, Saturation, Hue
Other Settings	Video Aspect (Video input only), Power Save, Reverse, Cursor [Color/Width], Beep, Language, Information	Video Aspect (Video input only), Power Save, Reverse, Cursor [Color/Width], Beep, Language, Touch Panel, Information	Video Aspect (Video input only), Power Save, Reverse, Cursor [Color/Width], Beep, Language, Touch Panel, Information	Video Aspect (Video input only), Power Save, Reverse, Cursor [Color/Width], Beep, Language, Touch Panel, Information	Video Aspect (Video input only), Power Save, Reverse, Cursor [Color/Width], Beep, Language, Date/Time, File, Information	Video Aspect (Video input only), Power Save, Reverse, Cursor [Color/Width], Beep, Language, Date/Time, File, Information
Certifications and Standards	c-Tick, CE, CB, FCC-B, VCCI-B, RoHS, WEEE	c-Tick, CE, CB, FCC-B, VCCI-B, RoHS, WEEE	c-Tick, CE, CB, FCC-B, VCCI-B, RoHS, WEEE	c-Tick, CE, CB, FCC-B, VCCI-B, RoHS, WEEE	c-Tick, CE, CB, FCC-B, VCCI-B, RoHS, WEEE	c-Tick, CE, CB, FCC-B, VCCI-B, RoHS, WEEE
Supplied Accessories	AC adaptor (included with stand, free mount, and rack mount options only), PDF user's manual with warranty card, clamper, 4 screws for mount option (included with free mount, panel mount, and chassis options only)	AC adaptor (included with stand, free mount, and rack mount options only), PDF user's manual with warranty card, clamper, 4 screws for mount option (included with free mount, panel mount, and chassis options only)	AC adaptor (included with stand, free mount, and rack mount options only), PDF user's manual with warranty card, touch panel cable (RS-232C), CD-ROM (touch panel driver), clamper, 4 screws for mount option (included with free mount, panel mount, and chassis options only)	AC adaptor (included with stand, free mount, and rack mount options only), PDF user's manual with warranty card, touch panel cable (RS-232C), CD-ROM (touch panel driver), clamper, 4 screws for mount option (included with free mount, panel mount, and chassis options only)	PDF user's manual with warranty card, clamper, 4 screws for mount option (included with free mount option only)	PDF user's manual with warranty card, clamper, 4 screws for mount option (included with free mount option only)
Warranty	Two Years	Two Years	Two Years	Two Years	Two Years	Two Years

Touch Panel

Touch Panel Type	-	-	Analog resistive	Analog resistive	-	-
Touch Life	-	-	10 million touches (minimum)	10 million touches (minimum)	-	-
Compatible OS	-	-	Windows Vista 32-bit Windows XP 32-bit Windows 2000	Windows Vista 32-bit Windows XP 32-bit Windows 2000	-	-
Communication Protocol	-	-	RS-232C	RS-232C	-	-

نماینده انحصاری مانیتورهای حرفه ای
در ایران EIZO



شرکت مهندسی مدال الکترونیک

تهران - یوسف آباد - خیابان ابن سینا خیابان ۲۵ - پلاک ۱۱ - واحد ۲

تلفن: ۹ - ۸۸۱۰۱۲۰۸ فکس: ۸۸۷۲۱۱۷۳